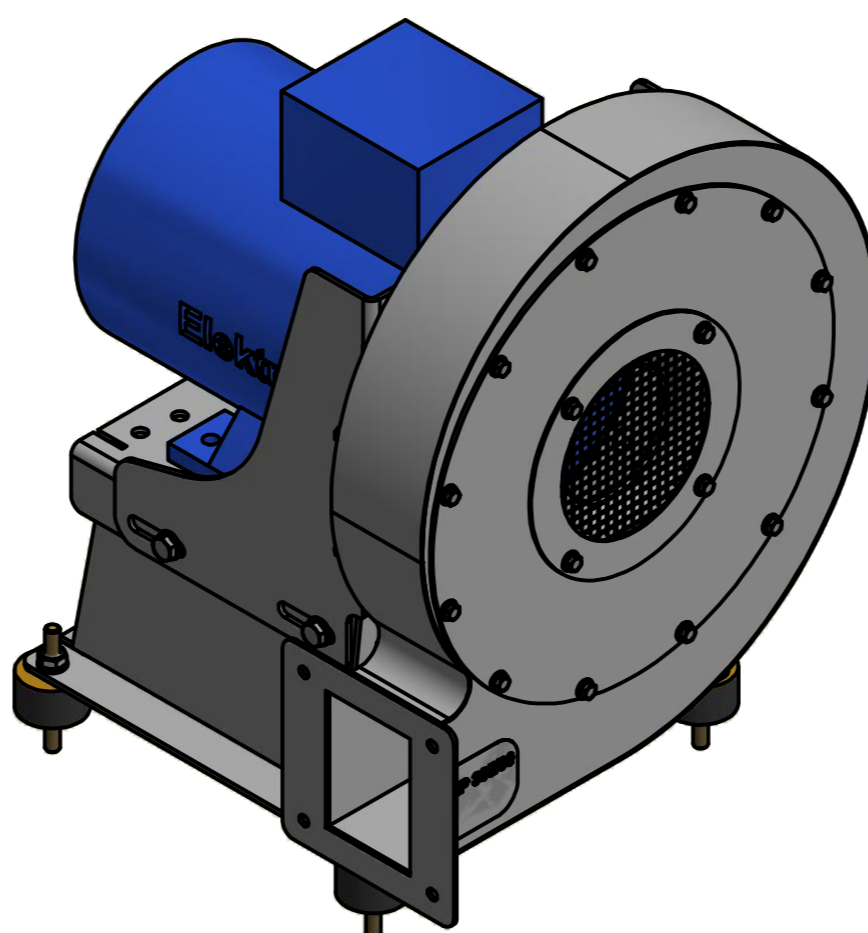
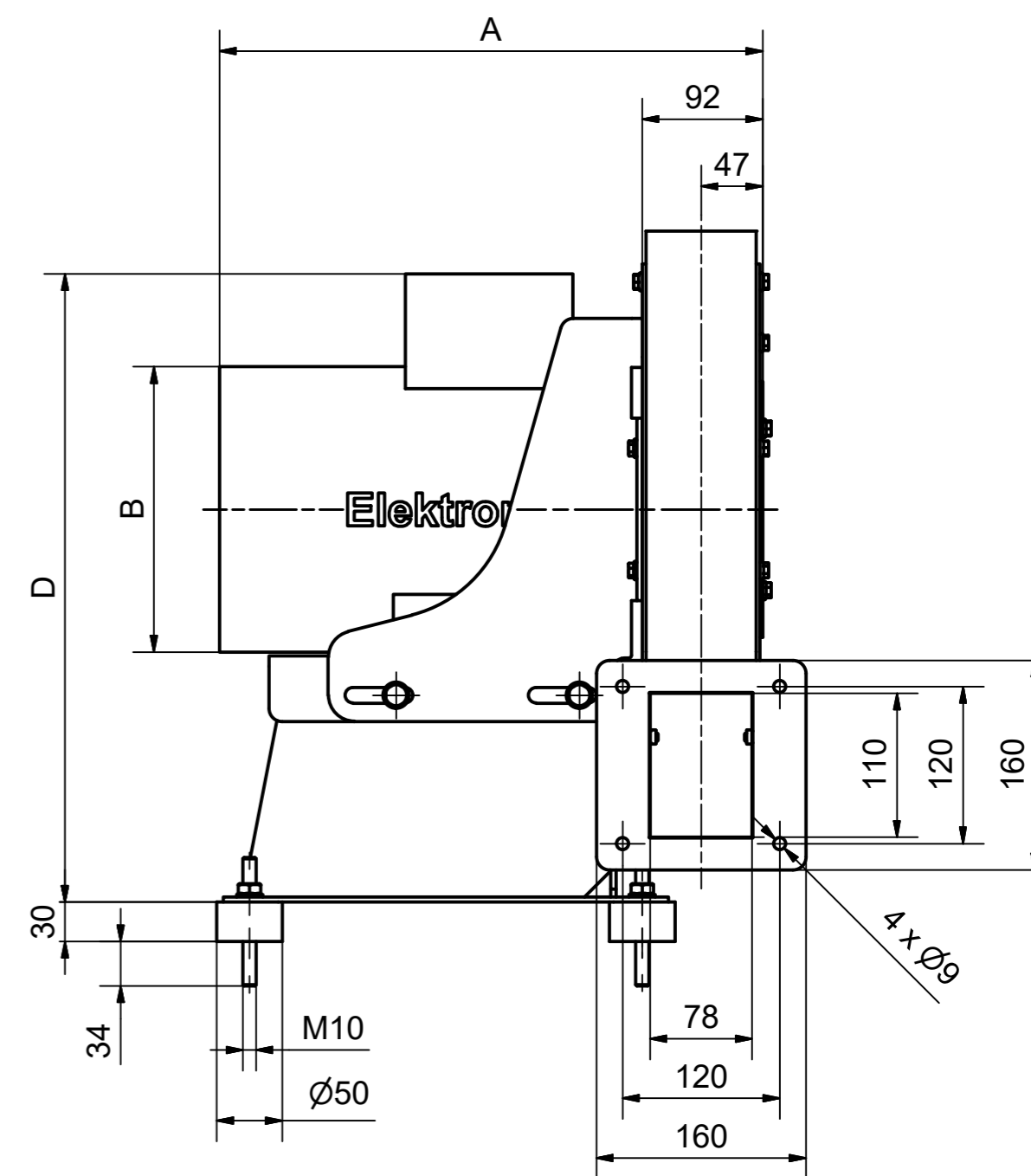
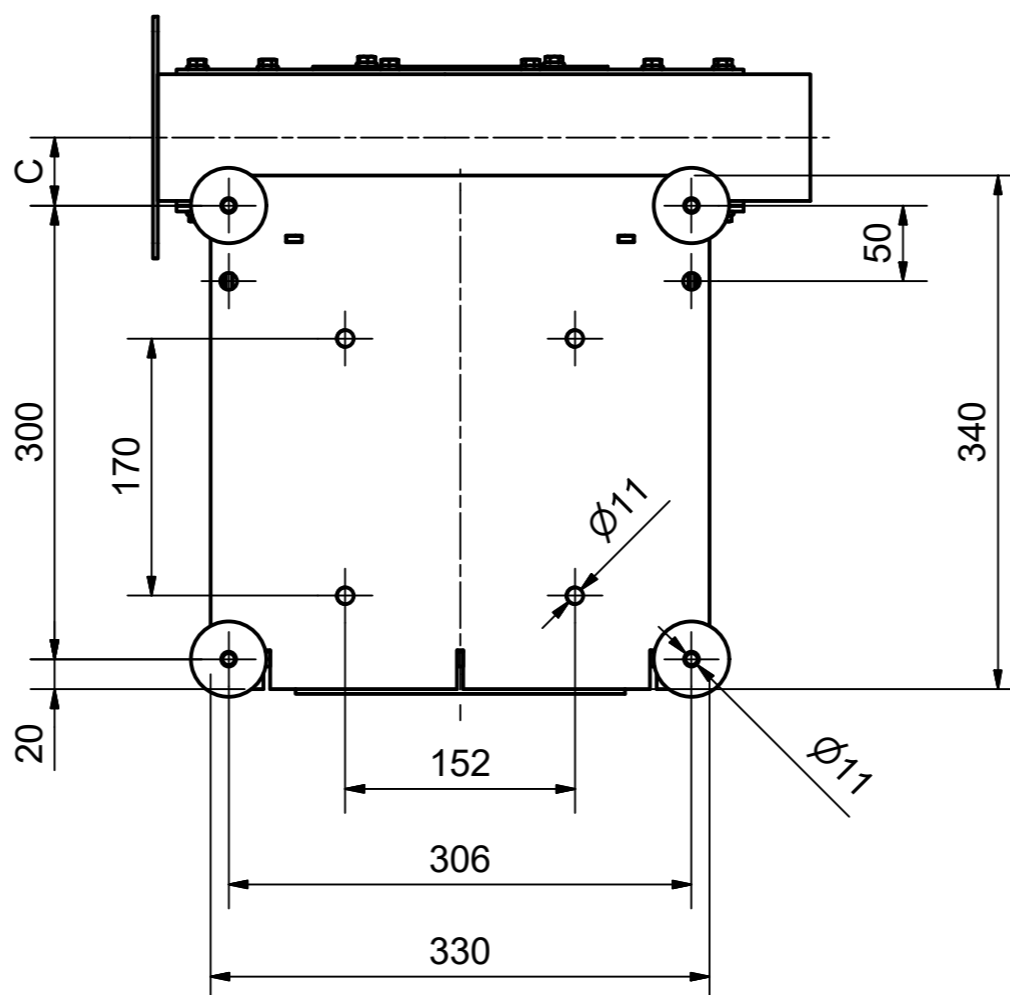


Ansicht A



Ventilator	Motor	A	B	C	D	E
S-HP 335/30	4,0 kW / 100L	397	194	43	466	288
S-HP 335/30	5,5 kW / 112M	415	218	45	480	300

Maße in mm unverbindlich. Änderungen vorbehalten.
 Dimensions in mm - subject to modifications. Changes reserved.

Revision	GMP hinzugefügt.			
Without our permission, this drawing may not be copied or reproduced, nor communicated or made accessible to third parties, in particular competitors. Illegal use by the recipient or third party has civil and criminal consequences. All dimensions are in mm and non-binding. Technical changes reserved.				
general tolerances DIN ISO 2768-mk		workpiece edges DIN ISO 13715		
		outer edges		inner edges
		KG		
raw material	weight unit	weight	material-no.	blower type
ISO 8015: 2011	scale	date	name	
	1 / 5	proc. 03.04.2019	ROTHT	
	A2	audited 03.04.2019	ROTHT	
S-HP 335/30-105/5,5/4,0, Stellung Ar, BG			Elektror airsystems gmbh	
			1094769-CDD-000	
			replaced by	
			replaced	
SAP DType IDWMN				