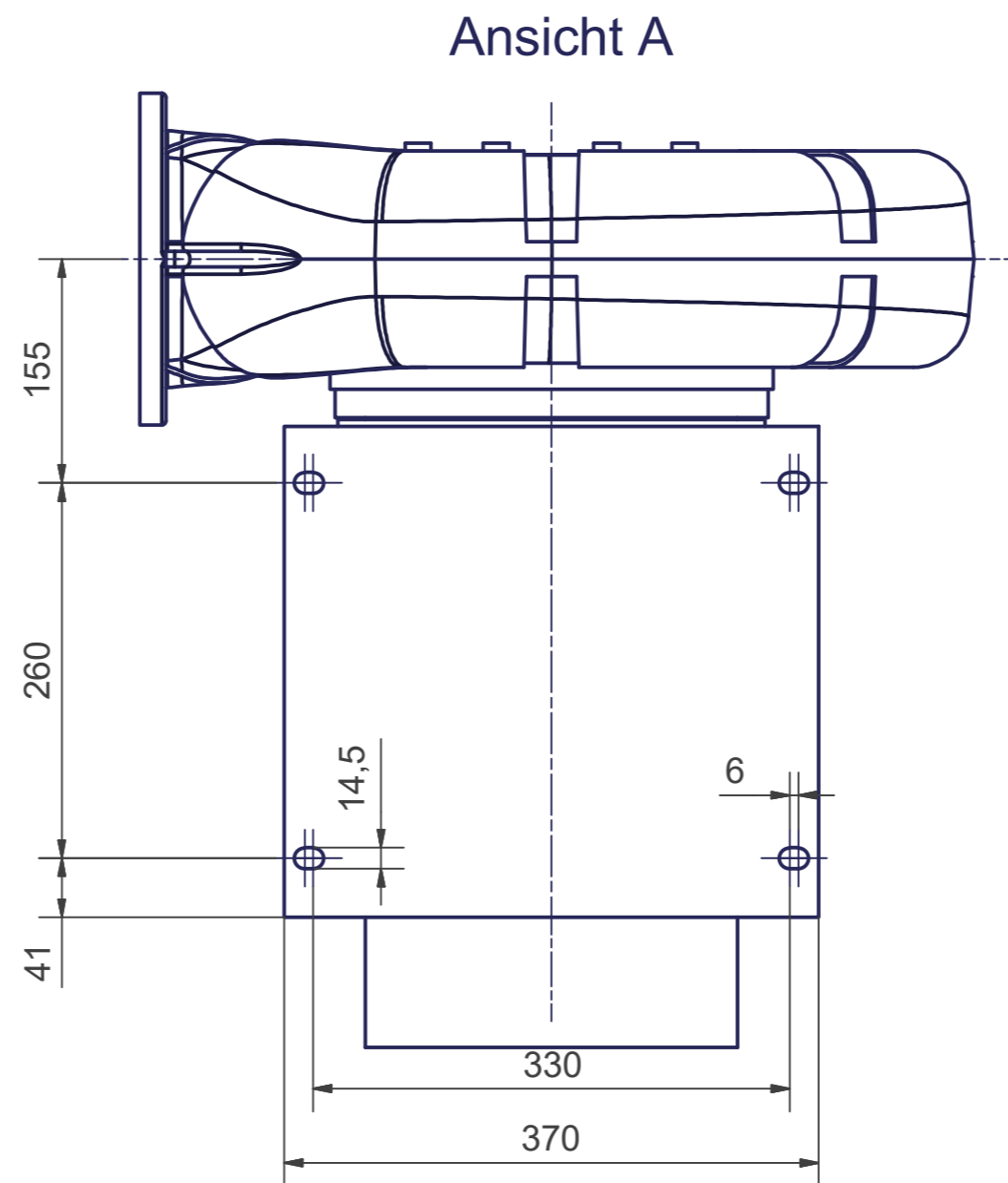
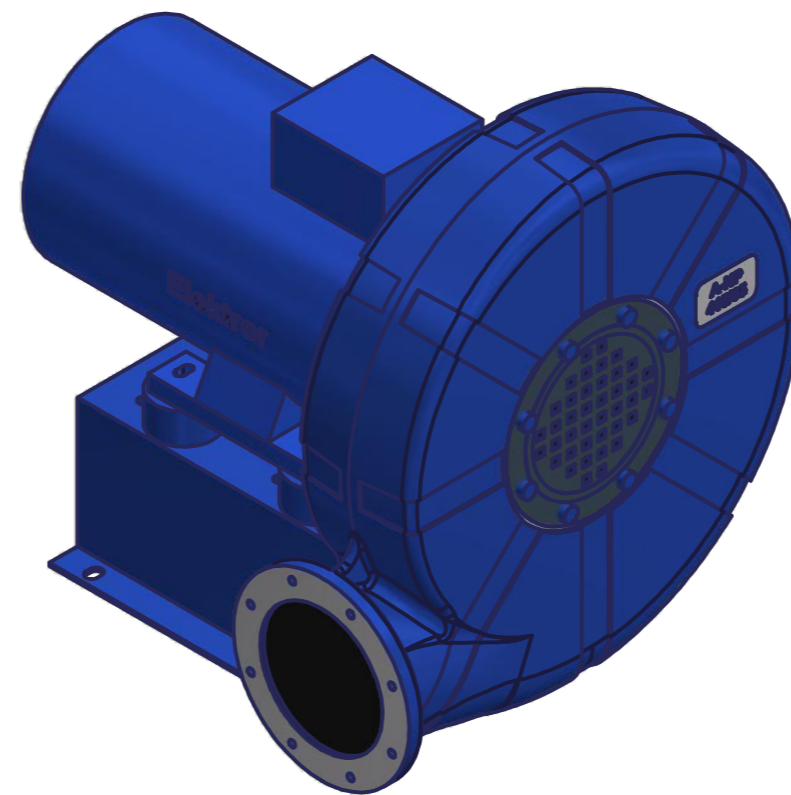
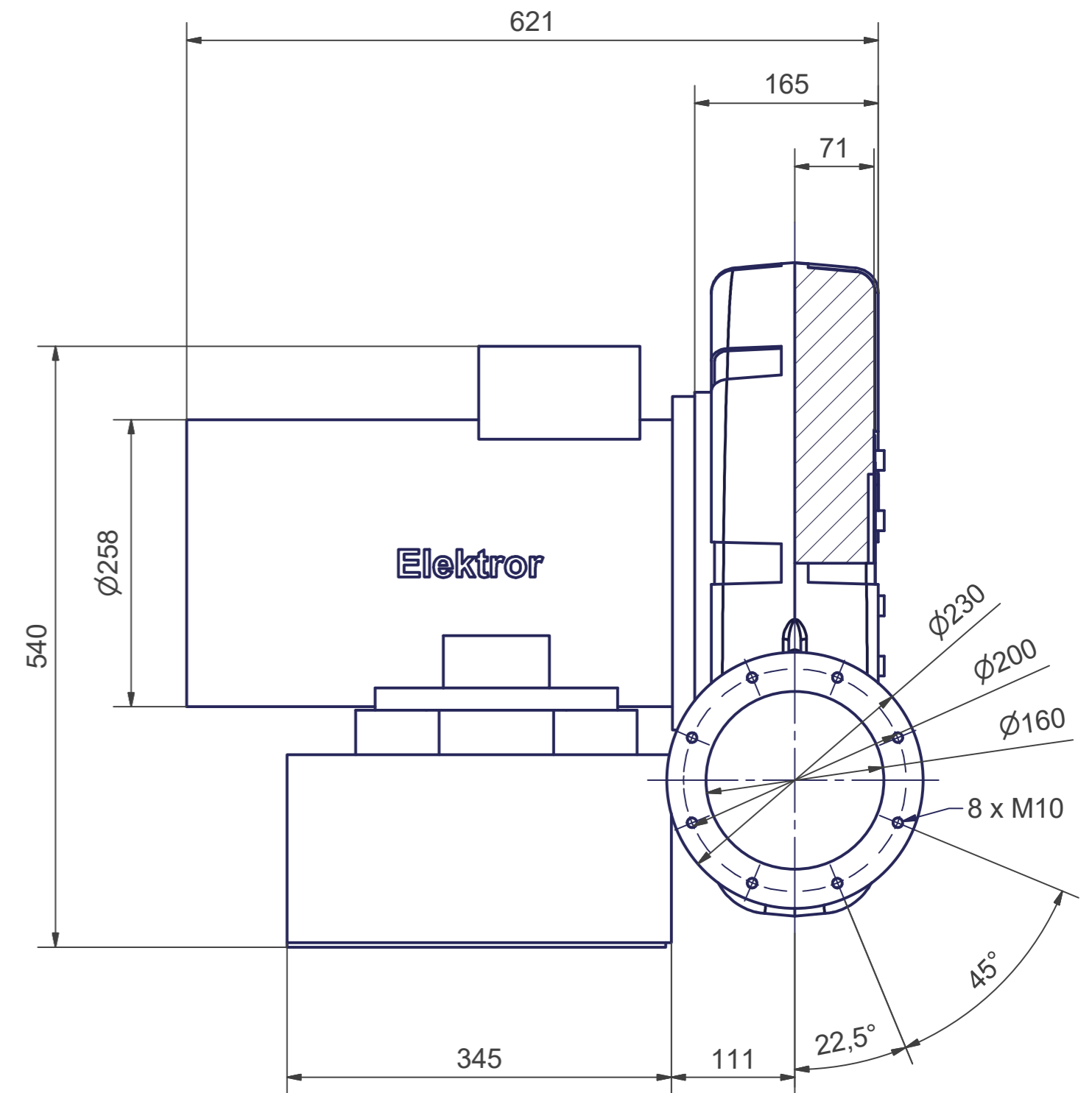


Ansicht A ↑



Ansicht A



\*Kann als Durchgangsloch für M8 Schrauben verwendet werden

\*Can be used as through-hole for M8 screw

Maße in mm - unverbindlich. Änderungen vorbehalten.  
Dimensions in mm - subject to modifications. Changes reserved.

Revision -				
Without our permission, this drawing may not be copied or reproduced, nor communicated or made accessible to third parties, in particular competitors. Illegal use by the recipient or third party has civil and criminal consequences. All dimensions are in mm and non-binding. Technical changes reserved.				
general tolerances DIN ISO 2768-mk		workpiece edges DIN ISO 13715		
		outer edges	-0,2	inner edges
raw material		KG	554,165	
		weight unit	weight	material-no.
				blower type
ISO 8015: 2011		scale	date	name
1 / 5		proc.	26.07.2019	BAUDNER
A2		audited	29.07.2019	BAUDNER
<b>A-HP 415/35 - 110/22,0 - LG270 (Ar)</b>				<b>Elektror</b> airsystems gmbh
				1086406-CDD-001
replaced by				index
replaced				-
SAP DType IDWMN				