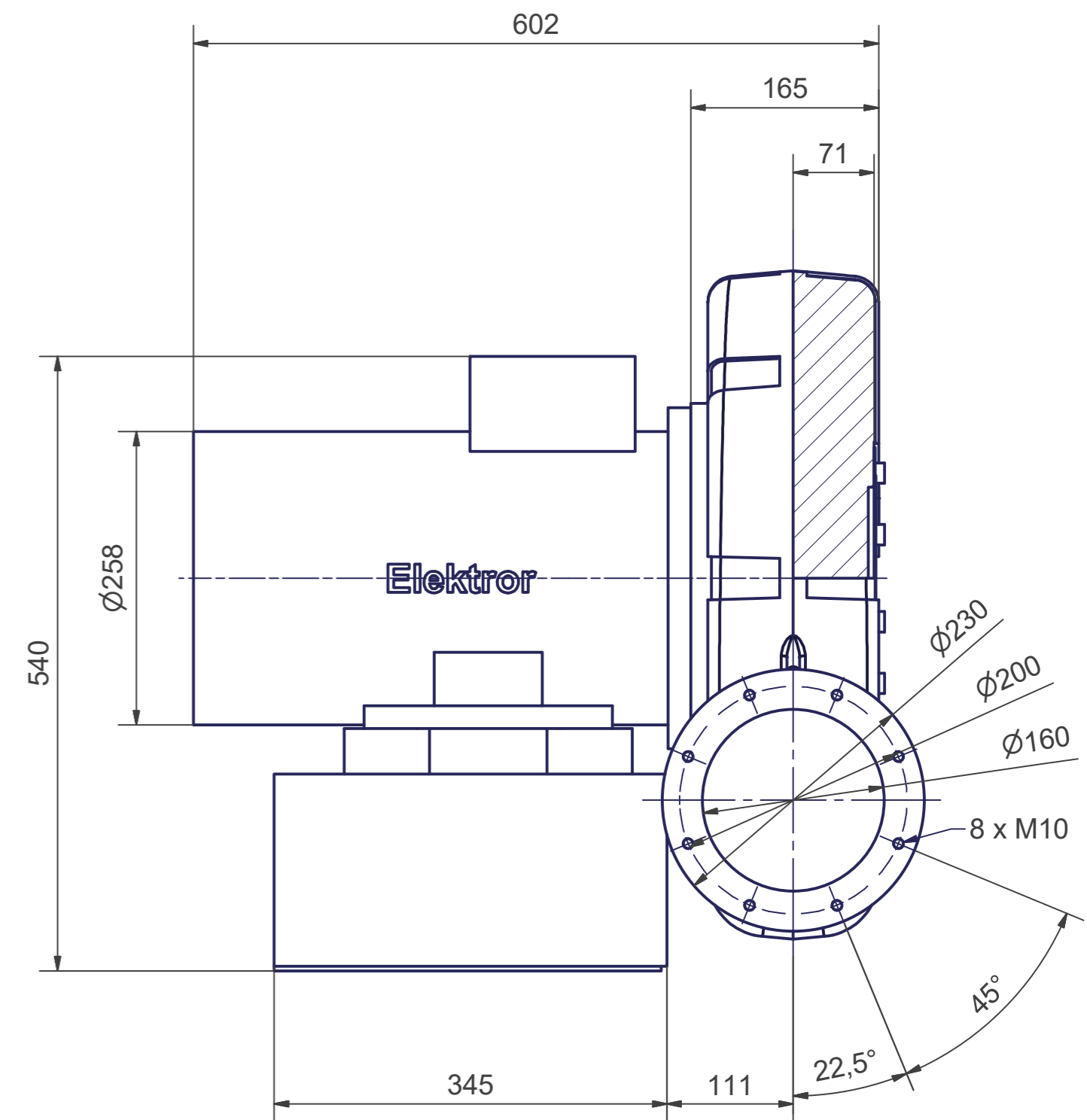
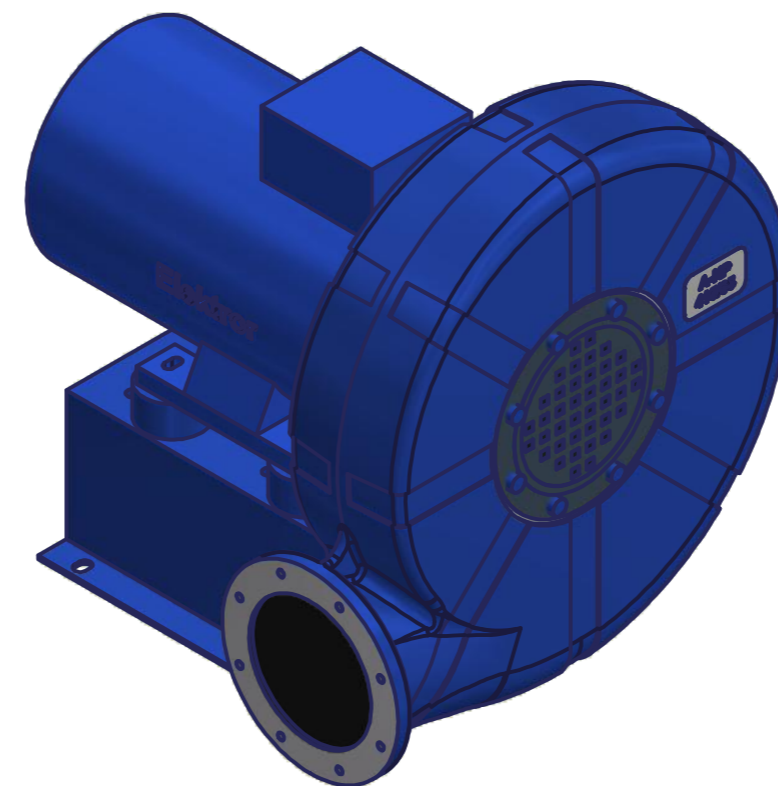
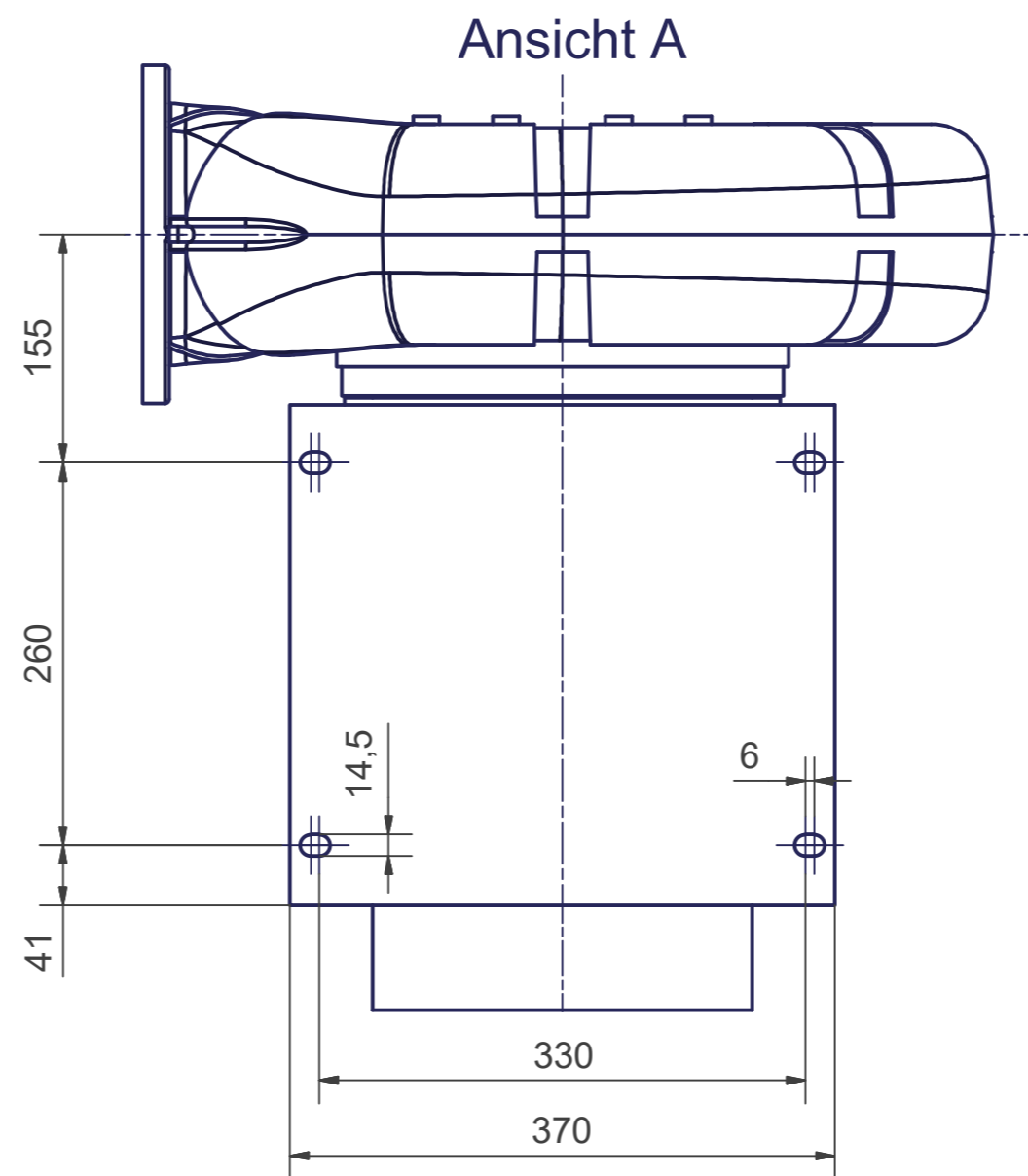


Ansicht A ↑



\*Kann als Durchgangsloch für M8 Schrauben verwendet werden

\*Can be used as through-hole for M8 screw

Maße in mm - unverbindlich. Änderungen vorbehalten.  
Dimensions in mm - subject to modifications. Changes reserved.

Revision -				
Without our permission, this drawing may not be copied or reproduced, nor communicated or made accessible to third parties, in particular competitors. Illegal use by the recipient or third party has civil and criminal consequences. All dimensions are in mm and non-binding. Technical changes reserved.				
general tolerances DIN ISO 2768-mk		workpiece edges DIN ISO 13715		
		outer edges	-0,2	inner edges
				+0,4
raw material	KG	554,165	material-no.	blower type
	weight unit	weight		
ISO 8015: 2011	scale	date	name	
	1 / 5	proc. 26.07.2019	BAUDNER	
	A2	audited 29.07.2019	BAUDNER	
<b>A-HP 415/35 - 110/18,5 - LG270 (Ar)</b>			<b>Elektror</b> airsystems gmbh	
			1086406-CDD-000	index
			replaced by	
			replaced	
SAP DType IDWMN				